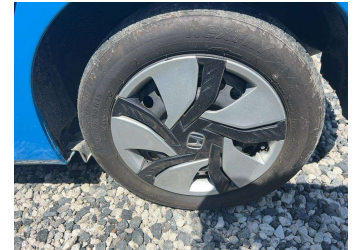
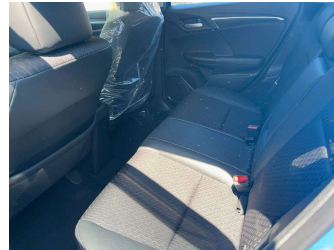



2013 Honda Fit Hybrid L PACKAGE



Purchase Price **\$14,990**
Includes GST, Registration & Licensing

Finance may be available on this vehicle. Ask one of our friendly staff for more information.



Gain peace of mind with Mechanical Breakdown Insurance. **Ask us how.**



Top features

- » AA Appraised
- » ABS Brakes
- » Air Conditioning
- » Car Stereo
- » CD Player
- » Central Locking
- » Central Locking
- » Chain Driven
- » Dual Air Bags
- » Fuel Injected
- » Monsoons
- » New Shape
- » Power Mirrors
- » Power Steering
- » Power Windows
- » Rear spoiler
- » Rear Wiper

Body Style
5 door, Hatchback

Odometer
66,220 km

Engine
1500 cc

Fuel Type
Hybrid

Transmission
Auto

Wheels
-

VIN
7AT08G2YX24024440

Interior
Black, Cloth/Leather

Safety



Based on 2023 UCSR rating for 14-20 models

Reg No.

-

Ext Colour
Blue

History

-

Seats
5 seats

CO2 Emissions
★★★★☆
92 grams/km

Energy Economy
★★★★☆

Annual fuel cost of \$1,530
3.9L per 100km

Cost per year is an estimate based on petrol price of \$2.80 per litre and an average distance of 14000 km. Emissions and Energy Economy figures standardised to 3P WLTP.

Stock ID: 15119



Upper Hutt Car Sales | Phone 04 528 7335 | Email uhcs@xtra.co.nz
15 King Street, Ebdentown, Upper Hutt 5018, New Zealand
www.upperhuttcarsales.co.nz